

Discharge Measurement Summary

Site name ECanal8
Site number 02
Operator(s) VAllen
File name EastCanal_20230706_1029.ft
Comment

Start time	7/6/2023 10:29 AM	Sensor type	Top Setting
End time	7/6/2023 11:30 AM	Handheld serial number	FT2H2219029
Start location latitude	42.809	Probe serial number	FT2P2219014
Start location longitude	-118.869	Probe firmware	1.30
Calculations engine	FlowTracker2	Handheld software	1.7

# Stations	Avg interval (s)	Total discharge (m³/s)
25	40	1.2556

Total width (m)	Total area (m²)	Wetted Perimeter (m)
3.658	1.87711	4.419

Mean SNR (dB)	Mean depth (m)	Mean velocity (m/s)
41	0.513	0.6689

Mean temp (°C)	Max depth (m)	Max velocity (m/s)
15.571	0.564	0.9605

Discharge Uncertainty		
Category	ISO	IVE
Accuracy	1.0%	1.0%
Depth	0.1%	1.2%
Velocity	0.2%	0.8%
Width	0.1%	0.1%
Method	0.8%	
# Stations	2.0%	
Overall	2.4%	1.8%

Discharge equation	Mid Section
Discharge uncertainty	IVE
Discharge reference	Rated

Data Collection Settings	
Salinity	0.000 PSS-78
Temperature	-
Sound speed	-
Mounting correction	0.000 %

Summary overview

No changes were made to this file
Quality control warnings

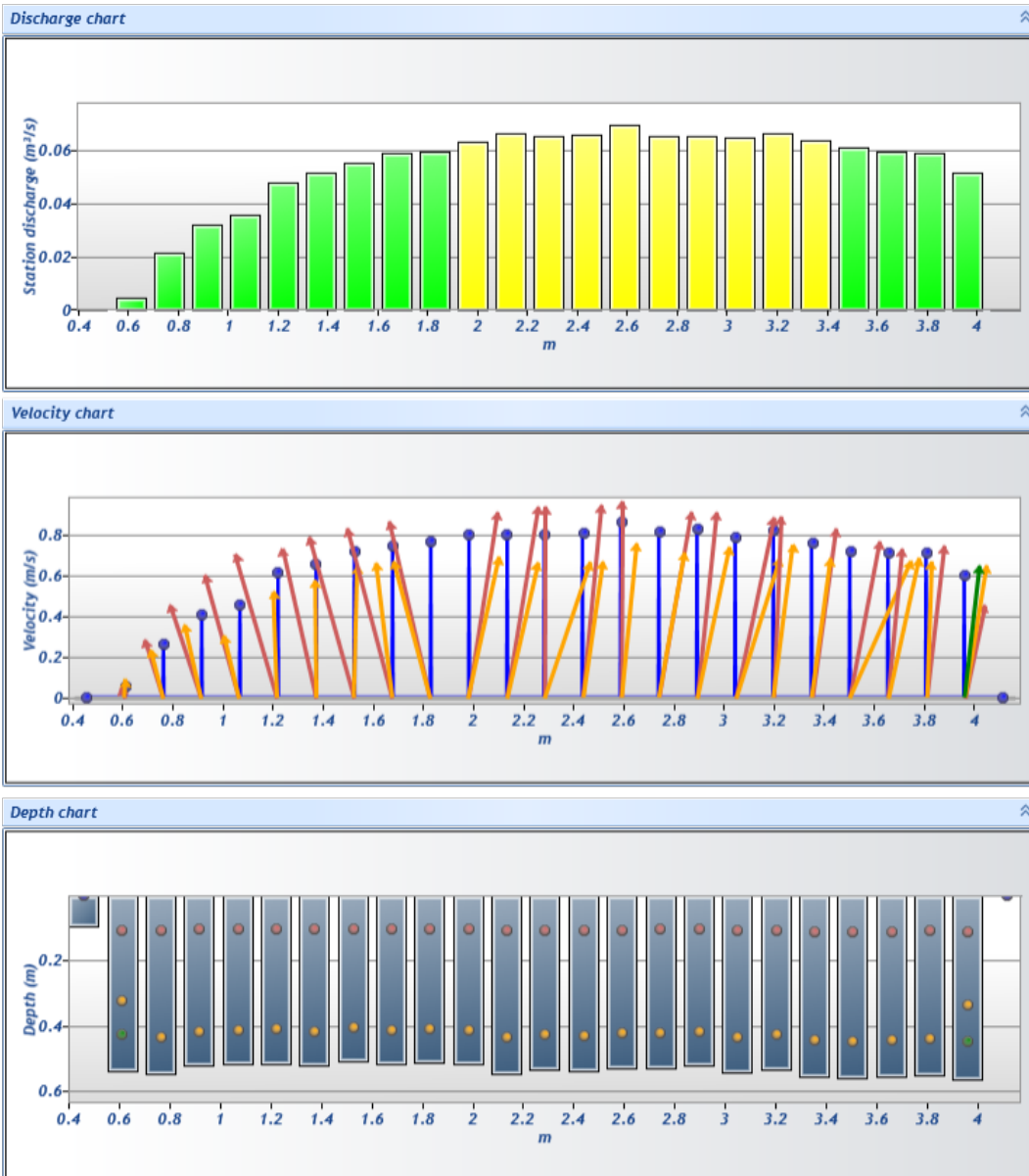


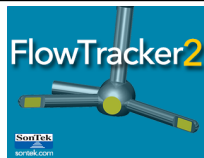
Discharge Measurement Summary

Site name ECanal8
Site number 02
Operator(s) VAllen
File name EastCanal_20230706_1029.ft
Comment

Station Warning Settings

Station discharge OK Station discharge < 5.00%
Station discharge caution 5.00% >= Station discharge < 10.00%
Station discharge warning Station discharge >= 10.00%



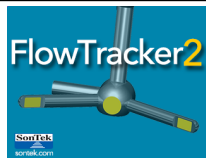


Discharge Measurement Summary

Site name ECanal8
Site number 02
Operator(s) VAllen
File name EastCanal_20230706_1029.ft
Comment

Measurement results

St#	Time	Location (m)	Method	Depth (m)	%Depth	Measured Depth (m)	Samples	Velocity (m/s)	Correction	Mean Velocity (m/s)	Area (m ²)	Flow (m ³ /s)	%Q	
24	11:30 AM	0.457	None	0.091	0.0000	0.000	0	0.0000	1.0000	0.0588	0.00697	0.0004	0.03	✓
23	11:26 AM	0.610	0.2/0.6/0.8	0.536	0.2000	0.107	80	0.0526	1.0000	0.0588	0.08175	0.0048	0.38	✓
23	11:26 AM	0.610	0.2/0.6/0.8	0.536	0.6000	0.322	80	0.0914	1.0000	0.0588	0.08175	0.0048	0.38	✓
23	11:26 AM	0.610	0.2/0.6/0.8	0.536	0.8000	0.429	80	-0.0001	1.0000	0.0588	0.08175	0.0048	0.38	✓
22	11:24 AM	0.762	0.2/0.8	0.546	0.2000	0.109	80	0.2858	1.0000	0.2610	0.08315	0.0217	1.73	✓
22	11:24 AM	0.762	0.2/0.8	0.546	0.8000	0.436	80	0.2362	1.0000	0.2610	0.08315	0.0217	1.73	✓
21	11:22 AM	0.914	0.2/0.8	0.521	0.2000	0.104	80	0.4528	1.0000	0.4057	0.07943	0.0322	2.57	✓
21	11:22 AM	0.914	0.2/0.8	0.521	0.8000	0.417	80	0.3586	1.0000	0.4057	0.07943	0.0322	2.57	✓
20	11:20 AM	1.067	0.2/0.8	0.518	0.2000	0.104	80	0.6011	1.0000	0.4543	0.07897	0.0359	2.86	✓
20	11:20 AM	1.067	0.2/0.8	0.518	0.8000	0.415	80	0.3076	1.0000	0.4543	0.07897	0.0359	2.86	✓
19	11:17 AM	1.219	0.2/0.8	0.515	0.2000	0.103	80	0.7029	1.0000	0.6105	0.07850	0.0479	3.82	✓
19	11:17 AM	1.219	0.2/0.8	0.515	0.8000	0.412	80	0.5182	1.0000	0.6105	0.07850	0.0479	3.82	✓
18	11:15 AM	1.372	0.2/0.8	0.521	0.2000	0.104	80	0.7301	1.0000	0.6515	0.07943	0.0518	4.12	✓
18	11:15 AM	1.372	0.2/0.8	0.521	0.8000	0.417	80	0.5730	1.0000	0.6515	0.07943	0.0518	4.12	✓
17	11:12 AM	1.524	0.2/0.8	0.509	0.2000	0.102	80	0.7864	1.0000	0.7154	0.07757	0.0555	4.42	✓
17	11:12 AM	1.524	0.2/0.8	0.509	0.8000	0.407	80	0.6443	1.0000	0.7154	0.07757	0.0555	4.42	✓
16	11:10 AM	1.676	0.2/0.8	0.518	0.2000	0.104	80	0.8295	1.0000	0.7445	0.07897	0.0588	4.68	✓
16	11:10 AM	1.676	0.2/0.8	0.518	0.8000	0.415	80	0.6595	1.0000	0.7445	0.07897	0.0588	4.68	✓
15	11:07 AM	1.829	0.2/0.8	0.512	0.2000	0.102	80	0.8631	1.0000	0.7649	0.07804	0.0597	4.75	✓
15	11:07 AM	1.829	0.2/0.8	0.512	0.8000	0.410	80	0.6666	1.0000	0.7649	0.07804	0.0597	4.75	✓
14	11:05 AM	1.981	0.2/0.8	0.518	0.2000	0.104	80	0.9076	1.0000	0.7991	0.07897	0.0631	5.03	✓
14	11:05 AM	1.981	0.2/0.8	0.518	0.8000	0.415	80	0.6907	1.0000	0.7991	0.07897	0.0631	5.03	✓
13	11:02 AM	2.134	0.2/0.8	0.546	0.2000	0.109	80	0.9323	1.0000	0.7972	0.08315	0.0663	5.28	✓
13	11:02 AM	2.134	0.2/0.8	0.546	0.8000	0.436	80	0.6621	1.0000	0.7972	0.08315	0.0663	5.28	✓
12	11:00 AM	2.286	0.2/0.8	0.533	0.2000	0.107	80	0.9356	1.0000	0.8003	0.08129	0.0651	5.18	✓
12	11:00 AM	2.286	0.2/0.8	0.533	0.8000	0.427	80	0.6649	1.0000	0.8003	0.08129	0.0651	5.18	✓
11	10:57 AM	2.438	0.2/0.8	0.539	0.2000	0.108	80	0.9429	1.0000	0.8034	0.08222	0.0661	5.26	✓
11	10:57 AM	2.438	0.2/0.8	0.539	0.8000	0.432	80	0.6639	1.0000	0.8034	0.08222	0.0661	5.26	✓
10	10:55 AM	2.591	0.2/0.8	0.530	0.2000	0.106	80	0.9605	1.0000	0.8577	0.08083	0.0693	5.52	✓
10	10:55 AM	2.591	0.2/0.8	0.530	0.8000	0.424	80	0.7549	1.0000	0.8577	0.08083	0.0693	5.52	✓
9	10:52 AM	2.743	0.2/0.8	0.527	0.2000	0.105	80	0.9095	1.0000	0.8103	0.08036	0.0651	5.19	✓
9	10:52 AM	2.743	0.2/0.8	0.527	0.8000	0.422	80	0.7111	1.0000	0.8103	0.08036	0.0651	5.19	✓
8	10:50 AM	2.896	0.2/0.8	0.521	0.2000	0.104	80	0.9067	1.0000	0.8222	0.07943	0.0653	5.20	✓
8	10:50 AM	2.896	0.2/0.8	0.521	0.8000	0.417	80	0.7377	1.0000	0.8222	0.07943	0.0653	5.20	✓
7	10:47 AM	3.048	0.2/0.8	0.543	0.2000	0.109	80	0.8820	1.0000	0.7836	0.08268	0.0648	5.16	✓
7	10:47 AM	3.048	0.2/0.8	0.543	0.8000	0.434	80	0.6852	1.0000	0.7836	0.08268	0.0648	5.16	✓
6	10:44 AM	3.200	0.2/0.8	0.533	0.2000	0.107	80	0.8858	1.0000	0.8171	0.08129	0.0664	5.29	✓
6	10:44 AM	3.200	0.2/0.8	0.533	0.8000	0.427	80	0.7484	1.0000	0.8171	0.08129	0.0664	5.29	✓
5	10:42 AM	3.353	0.2/0.8	0.555	0.2000	0.111	80	0.8280	1.0000	0.7561	0.08454	0.0639	5.09	✓
5	10:42 AM	3.353	0.2/0.8	0.555	0.8000	0.444	80	0.6842	1.0000	0.7561	0.08454	0.0639	5.09	✓
4	10:40 AM	3.505	0.2/0.8	0.561	0.2000	0.112	80	0.7650	1.0000	0.7168	0.08547	0.0613	4.88	✓
4	10:40 AM	3.505	0.2/0.8	0.561	0.8000	0.449	80	0.6687	1.0000	0.7168	0.08547	0.0613	4.88	✓
3	10:37 AM	3.658	0.2/0.8	0.555	0.2000	0.111	80	0.7285	1.0000	0.7066	0.08454	0.0597	4.76	✓
3	10:37 AM	3.658	0.2/0.8	0.555	0.8000	0.444	80	0.6847	1.0000	0.7066	0.08454	0.0597	4.76	✓
2	10:35 AM	3.810	0.2/0.8	0.549	0.2000	0.110	80	0.7441	1.0000	0.7055	0.08361	0.0590	4.70	✓
2	10:35 AM	3.810	0.2/0.8	0.549	0.8000	0.439	80	0.6669	1.0000	0.7055	0.08361	0.0590	4.70	✓
1	10:30 AM	3.962	0.2/0.6/0.8	0.564	0.2000	0.113	80	0.4539	1.0000	0.5992	0.08594	0.0515	4.10	✓
1	10:30 AM	3.962	0.2/0.6/0.8	0.564	0.6000	0.338	80	0.6483	1.0000	0.5992	0.08594	0.0515	4.10	✓
1	10:30 AM	3.962	0.2/0.6/0.8	0.564	0.8000	0.451	80	0.6464	1.0000	0.5992	0.08594	0.0515	4.10	✓
0	10:29 AM	4.115	None	0.000	0.0000	0.000	0	0.0000	1.0000	0.5992	0.00000	0.0000	0.00	✓



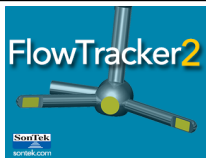
Discharge Measurement Summary

Site name ECanal8
Site number 02
Operator(s) VAllen
File name EastCanal_20230706_1029.ft
Comment

Quality Control Settings

Maximum depth change 50.00%
Maximum spacing change 100.00%
SNR threshold 10 dB
Standard error threshold 0.0100 m/s
Spike threshold 10.00%
Maximum velocity angle 20.0 deg
Maximum tilt angle 5.0 deg

Quality control warnings							
St#	Time	Location (m)	Method	Depth (m)	%Depth	Measured Depth (m)	Warnings
23	11:26 AM	0.610	0.2/0.6/0.8	0.536	0.2000	0.107	Water Depth > QC
23	11:26 AM	0.610	0.2/0.6/0.8	0.536	0.6000	0.322	Water Depth > QC
23	11:26 AM	0.610	0.2/0.6/0.8	0.536	0.8000	0.429	Water Depth > QC
22	11:24 AM	0.762	0.2/0.8	0.546	0.2000	0.109	Standard Error > QC
22	11:24 AM	0.762	0.2/0.8	0.546	0.8000	0.436	Standard Error > QC
21	11:22 AM	0.914	0.2/0.8	0.521	0.2000	0.104	Standard Error > QC
21	11:22 AM	0.914	0.2/0.8	0.521	0.8000	0.417	Standard Error > QC
19	11:17 AM	1.219	0.2/0.8	0.515	0.2000	0.103	Standard Error > QC
19	11:17 AM	1.219	0.2/0.8	0.515	0.8000	0.412	Standard Error > QC
18	11:15 AM	1.372	0.2/0.8	0.521	0.2000	0.104	Standard Error > QC
18	11:15 AM	1.372	0.2/0.8	0.521	0.8000	0.417	Standard Error > QC
17	11:12 AM	1.524	0.2/0.8	0.509	0.2000	0.102	Standard Error > QC
17	11:12 AM	1.524	0.2/0.8	0.509	0.8000	0.407	Standard Error > QC
16	11:10 AM	1.676	0.2/0.8	0.518	0.2000	0.104	Standard Error > QC
16	11:10 AM	1.676	0.2/0.8	0.518	0.8000	0.415	Standard Error > QC
15	11:07 AM	1.829	0.2/0.8	0.512	0.2000	0.102	Standard Error > QC
15	11:07 AM	1.829	0.2/0.8	0.512	0.8000	0.410	Standard Error > QC
14	11:05 AM	1.981	0.2/0.8	0.518	0.2000	0.104	Standard Error > QC
14	11:05 AM	1.981	0.2/0.8	0.518	0.8000	0.415	Standard Error > QC
13	11:02 AM	2.134	0.2/0.8	0.546	0.2000	0.109	Standard Error > QC
13	11:02 AM	2.134	0.2/0.8	0.546	0.8000	0.436	Standard Error > QC
12	11:00 AM	2.286	0.2/0.8	0.533	0.2000	0.107	Standard Error > QC
12	11:00 AM	2.286	0.2/0.8	0.533	0.8000	0.427	Standard Error > QC
11	10:57 AM	2.438	0.2/0.8	0.539	0.2000	0.108	Standard Error > QC
11	10:57 AM	2.438	0.2/0.8	0.539	0.8000	0.432	Standard Error > QC
10	10:55 AM	2.591	0.2/0.8	0.530	0.2000	0.106	Standard Error > QC
10	10:55 AM	2.591	0.2/0.8	0.530	0.8000	0.424	Standard Error > QC
9	10:52 AM	2.743	0.2/0.8	0.527	0.2000	0.105	Standard Error > QC
9	10:52 AM	2.743	0.2/0.8	0.527	0.8000	0.422	Standard Error > QC
8	10:50 AM	2.896	0.2/0.8	0.521	0.2000	0.104	Standard Error > QC
8	10:50 AM	2.896	0.2/0.8	0.521	0.8000	0.417	Standard Error > QC
7	10:47 AM	3.048	0.2/0.8	0.543	0.2000	0.109	Standard Error > QC
7	10:47 AM	3.048	0.2/0.8	0.543	0.8000	0.434	Standard Error > QC
6	10:44 AM	3.200	0.2/0.8	0.533	0.2000	0.107	Standard Error > QC
6	10:44 AM	3.200	0.2/0.8	0.533	0.8000	0.427	Standard Error > QC
5	10:42 AM	3.353	0.2/0.8	0.555	0.2000	0.111	Standard Error > QC
5	10:42 AM	3.353	0.2/0.8	0.555	0.8000	0.444	Standard Error > QC
4	10:40 AM	3.505	0.2/0.8	0.561	0.2000	0.112	Standard Error > QC, Velocity Angle > QC
4	10:40 AM	3.505	0.2/0.8	0.561	0.8000	0.449	Standard Error > QC, Velocity Angle > QC
3	10:37 AM	3.658	0.2/0.8	0.555	0.2000	0.111	Standard Error > QC
3	10:37 AM	3.658	0.2/0.8	0.555	0.8000	0.444	Standard Error > QC
2	10:35 AM	3.810	0.2/0.8	0.549	0.2000	0.110	Standard Error > QC
2	10:35 AM	3.810	0.2/0.8	0.549	0.8000	0.439	Standard Error > QC
1	10:30 AM	3.962	0.2/0.6/0.8	0.564	0.2000	0.113	Water Depth > QC, Standard Error > QC
1	10:30 AM	3.962	0.2/0.6/0.8	0.564	0.6000	0.338	Water Depth > QC, Standard Error > QC
1	10:30 AM	3.962	0.2/0.6/0.8	0.564	0.8000	0.451	Water Depth > QC, Standard Error > QC
0	10:29 AM	4.115	None	0.000	0.0000	0.000	Water Depth > QC



Discharge Measurement Summary

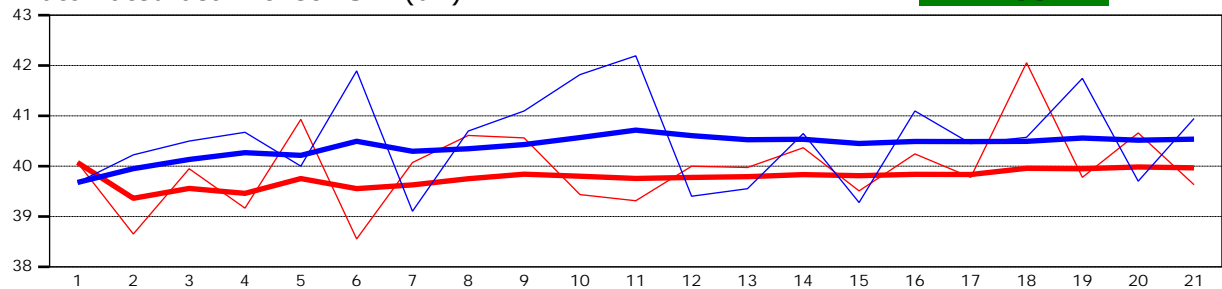
Site name ECanal8
Site number 02
Operator(s) VAllen
File name EastCanal_20230706_1029.ft
Comment

Beam 1	
Beam 2	

Automated beam check Start time 7/6/2023 10:29:17 AM

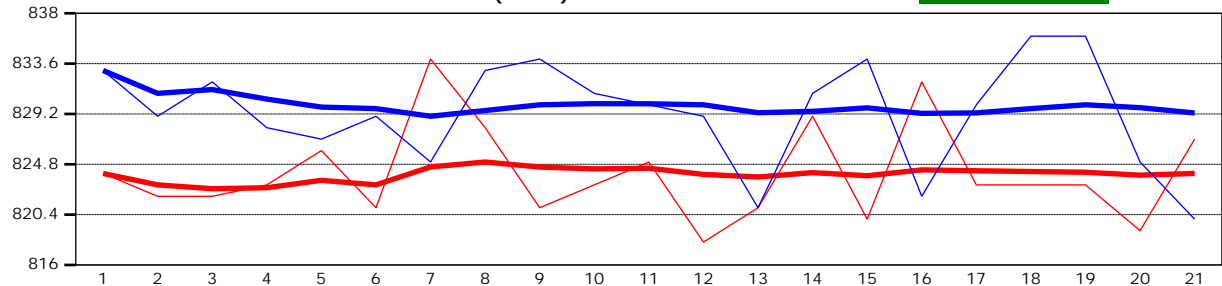
Automated beam check SNR(dB)

PASS



Automated beam check Noise level(cnts)

PASS



Automated beam check Quality control warnings

No quality control warnings



Discharge Measurement Summary

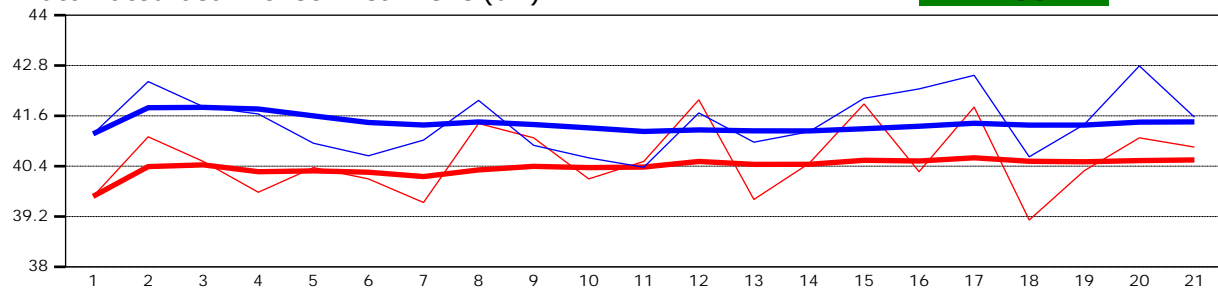
Site name ECanal8
Site number 02
Operator(s) VAllen
File name EastCanal_20230706_1029.ft
Comment

Beam 1	
Beam 2	

Automated beam check Start time 7/6/2023 10:29:17 AM

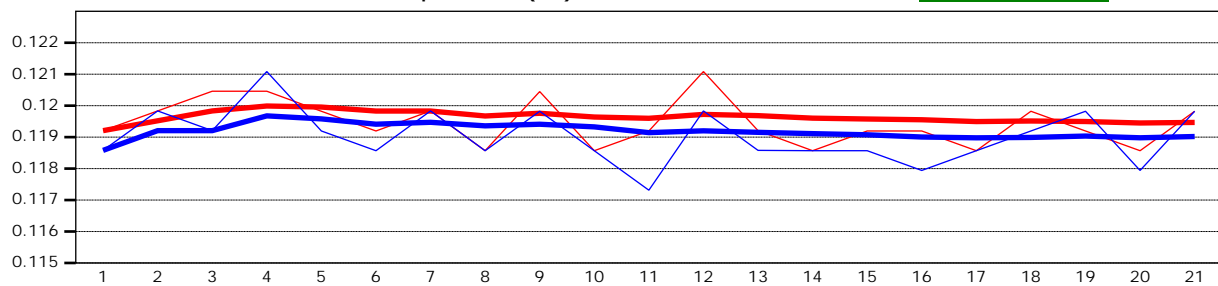
Automated beam check Peak level(dB)

PASS



Automated beam check Peak position(m)

PASS



Automated beam check Quality control warnings

No quality control warnings